



شركة التعاقد الأساسي للمقاولات  
BASELINE CONTRACTING COMPANY

رؤية  
VISION  
2030  
المملكة العربية السعودية  
KINGDOM OF SAUDI ARABIA

# WELCOME TO

## BASELINE CONTRACTING COMPANY

### IT & TRADING



WWW.BASELINEKSA.COM

# DATA AND TELECOMMUNICATION PRODUCTS

Baseline IT And Trading Company is a leading wholesaler and retailer of data and telecommunication products, committed to becoming the most loved and trusted marketplace in the Kingdom of Saudi Arabia. We tirelessly pursue these goals by offering a superior shopping experience, rapid delivery and stellar customer service.

To make sure the highest level of customer service we setup our showrooms and warehouses in major cities, like Riyadh, Jeddah and Al-Khobar. We equip our customers with state-of-the-art decision-making resources, peace of mind shopping experience with lightning-fast delivery and cutting-edge logistics.

We've dedicated ourselves to making sure that everyone enjoys shopping at Baseline. We take great pride in working passionately to exceed your expectations each and every time you shop with us.

# VISION

To be a trusted provider of superior quality communication products and services that, CUSTOMERS always recommend to others, EMPLOYEES are proud of it, SUPPLIERS are preferred and INVESTORS seeks for longtermreturn.

## OUR CORE VALUES

### VALUE

To provide real and measurable value to clients who are equally engaged in the business.

### SERVICE

To provide the best service by being proactive and excellence, every time.

### EFFICIENCY

To live and breathe efficiency and always be effective in our approach.

### PARTNERSHIP

To work as a team with our clients, understanding their challenges and delivering the best service.

### INTEGRITY

To always act with honesty and professionalism, like our clients

### COMMUNITY

To have a sense of responsibility and a contribution to society that de nesour existence.

### BALANCE

To maintain and foster a happy, healthy life and work balance.

### FUN

To enjoy the process and celebrate successes in our mutual journey.



CORE  
VALUES

# PRODUCTS

## POWER SOLUTION

Could your IT operations withstand a power outage...? Preventing downtime starts requires efficient and well-managed critical power backup installation.



## TOOLS & TESTING

The performance of the network is highly depends on the installation and commissioning, which is requires high precision tools and testing equipment. Efficiency is critical during cable installation. Increasingly vast networks of wires and cables supply vital power and communication services, increasing demands on contractor's time,



We provide complete range of networking tools and testing equipment's like Network tool kit, fiber optic tools, fiber splicing tools, fiber and copper testing tools like network analyser, Power meter and OTDR



# COPPER PRODUCTS

Structured Cabling is the backbone of all the modern network infrastructure. The wiring used to connect all of the devices on the network must be of the highest level of quality possible. The pace of this technology developments is moving ever faster, as data get huge in size and more information needs to be transmitted, your network needs the capability of the latest developments in structured cabling.

Baseline Company a complete portfolio of precision solutions to address your communications cabling and data center demands. Whether you are looking for a Cat5e, Cat6, Cat6a or Cat7/7a structured cabling system, we have the best solution from the world trusted vendor.



# FIBER PRODUCTS

We established ourselves as the market leader and the best solution provider for the fiber optic solutions. We take care to ensure our customers are provided with personalized and reliable services on every occasion.

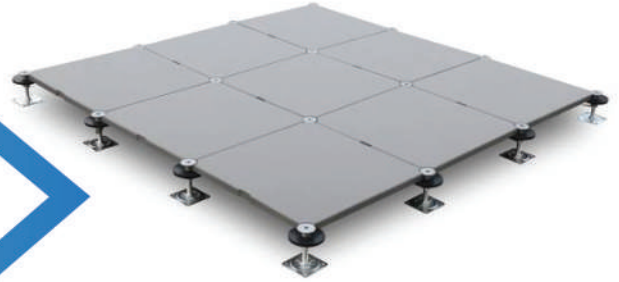
As a leading supplier of advanced fiber optic products, we have an extensive range of products offering that includes fiber optic cables for indoor and outdoor applications, connectors, adapters, patch cords, patch panel, splice tray, enclosure, faceplates, break out and fan out assemblies, GEAPON splitter, FTTH solutions, MPO assemblies, termination kits and tooling.



# DATA CENTER PREPARATION

**BASELINE COMPANY SPECIALIZED** in the design, Installation and maintenance of DATA CENTERS for governments, corporate organizations, hotels and individuals throughout the Kingdom of Saudi Arabia. Our Data centers services includes the following:

Power Backup System  
Cable Pathways System  
Fire Suppression  
Temperature Monitoring system  
Water Leakage System  
Civil Work  
Fire Rated Paints



- a. Gypsum Walls & Partitioning
- b. Glass Door Installation
- c. False Ceiling
- d. Raise Flooring



# ALL CISCO AND HP PRODUCTS

- Cisco Switches and Routers
- Cisco Access Point Indoor & Outdoor
- Cisco Industrial Switches
- Cisco Transceivers
- Cisco Modules
- Cisco IP Phones
- HP Switches
- Hp Access Points
- HP Transceivers



# TELEPHONE SYSTEM

A telephone system is a multiline telephone system typically used in business environments, encompassing systems ranging from small key telephone systems to large-scale private branch exchanges. A business telephone system differs from an installation of several telephones with multiple central office (CO) lines in that the CO lines used are directly controllable in key telephone systems from multiple telephone stations, and that such a system often provides additional features related to call handling. Business telephone systems are often broadly classified into key telephone systems, and private branch exchanges,



(PBX) in that it did not require an operator or attendant at the switchboard to establish connections between the central office trunks and stations, or between stations. Technologically, private branch exchanges share lineage with central office telephone systems, and in larger or more complex systems, may rival a central office system in capacity and features. With a key telephone system, a station user could control the connections directly using line buttons, which indicated the status of lines with built-in lamps.





# LATEST SERVER



## DELL AND HP SERVERS

Baseline is also specialized in  
All kind of HP & Dell Workstation  
Gaming Laptops  
Notebooks and Laptops  
Printers and Scanners



# GAMING LAPTOPS & PC'S



## BASELINE IS ALSO SPECIALIZED IN ALL KIND OF HP & DELL WORKSTATION

Gaming Laptops

Notebooks and Laptops

Printers and Scanners



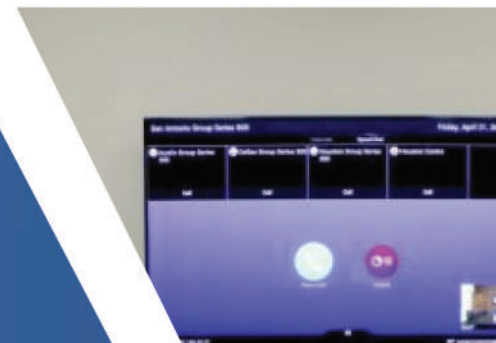
# SYSTEMS

Baseline CONTRACTING specializes in the design, installation and maintenance of integrated security systems for government facilities, corporate organizations, hotels and individuals throughout the Kingdom of Saudi Arabia



## OUR INTEGRATED SYSTEMS INCLUDES THE FOLLOWING:

- Access Control
- CCTV
- Intruder Alarm
- Audio Video System
- Public Address
- Master Clock
- Audio Visual
- Digital Signage
- Wireless Communications
- Implement of Data center and
- computer control Room



# ACCESS CONTROL SYSTEM

- Access control is the process of controlling who can go where and when. These are known as access rights. Each person can have different access rights depending on their needs.
- Baseline Contracting . is a specialist in the field of access control, offering a complete design, installation and maintenance package that is tailor made to each individual client's requirements and objectives.
- We can assure to provide the powerful integrated solutions for organizations requiring automated security. Solutions are available for organizations of any size – from small offices requiring just a few card readers to large companies spread over multiple sites and countries.
- The Symmetry™ Management Systems include the following:
  - Access Control; Video Management; Intruder Detection; Alarms Monitoring; Intercom Control; Web Access; Visitor Management; Badging; Digital Video Recording; Smart-Card Technology; Control Panels; Card Readers
- The Symmetry™ multi-NODE range of controllers provides the distributed intelligence for access control and alarms monitoring.
- Using the relevant rules set up on the client PCs, the Symmetry multi NODE Controllers manage the connected devices, including readers, locking devices, alarm sensors and auxiliary outputs.
- A Symmetry™ multi NODE Controller can operate offline from the client PCs to decide whether to grant access and can respond in the desired manner to any attempted access violation.
- Symmetry™ SMS can be custom designed to provide a synergistic solution with any combination of access control digital video, identity management, alarm monitoring, intrusion, and visitor management.

- The key design concept behind the Symmetry™ multi NODE hardware is modularity, which enables you to choose and purchase only those components that are required, right down to the PCB level. This approach leads to extremely cost-effective solutions that are tailored to your own requirements

## PRODUCT DEALING:



# Honeywell



**FIRE & SECURITY**  
*First choice for Quality*

**Schneider**  
Electric

# CCTV SYSTEM

Baseline Contracting. is a market leader in the design and installation of effective CCTV systems and surveillance cameras. We have been designing CCTV and integrated systems for many years and our expertise is second to none

## EFFECTIVE TAILOR-MADE CCTV SYSTEMS FOR YOUR BUSINESS

From single camera to multiple sites, multiple camera systems incorporating hundreds of cameras, Baseline Contracting. Security Systems has experience in designing and installing them all. We install the very latest in system technology and are constantly reviewing and researching new products to make sure that we stay at the forefront of the cutting-edge product technology.

Baseline Contracting has standardized on CCTV Systems with our own products as first choice and secondly with a range of selected reliable manufacturers. We offer a wide variety of CCTV Solutions to our customers and always supplies the products which can meet the client's requirement and cost effective.

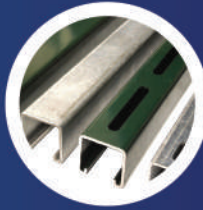
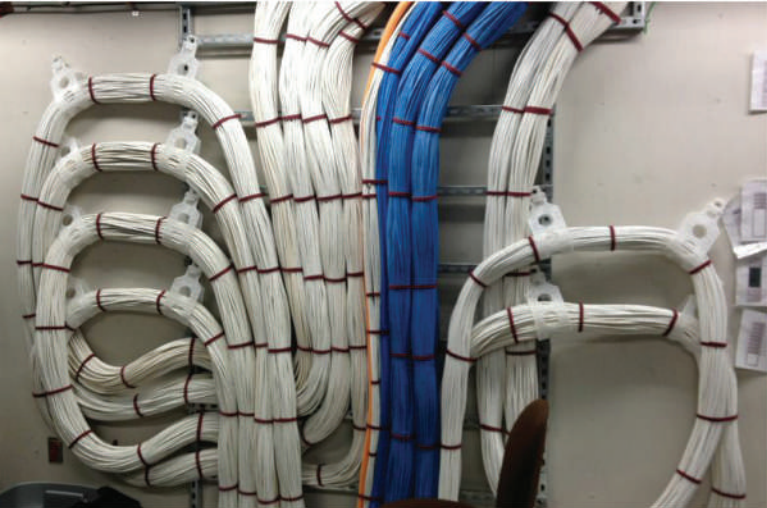


# PUBLIC ADDRESS SYSTEM

Our array of Public Address System is exclusively designed for public addressing and emergency purposes. These fully digitalized systems play a significant role in the small, medium sized applications such as IT parks, factories, offices shopping malls, supermarkets, schools and universities. The BOSCH certified system meets all the needs of professional users on a public address, emergency, car calling systems.



# CABLING & CABLE TRAY INSTALLATIONS:





# ELECTRICAL MAINTENANCE, TESTING AND COMMISSIONING SERVICES

Baseline Contracting Provide best of Our Services to Fix Electrical problems and our emergency service team is available 24/7. From fixing light fixtures to complete electrical installation, we undertake all type of electrical work. No job is too small for us. Our domestic service include complete electrical testing, Installation and fault finding, Installation of electrical light fittings, Electrical appliances, Switches & fixtures, Garden lights, Emergency lights. Repair and maintenance tasks related to electricity and electrical system in your house, apartment and commercial building is a very serious and delicate job. With the running electricity in the circuit, you can't just repair the faulty sockets and switches by yourself but you need to have an expert electrician to get the job done in the best possible way and with no extra charges for repairs and stuff. We will provide you the best and top handymen electricians with excellent skills and expertise. Not only that but our professional electrical staff works with complete insurance which means God forbid, if there is any incident on site, our insurance provider will pay for all kinds of repair and damages including yours too.



# INDUSTRIAL SUPPLIES

## SANITARY & PLUMBING ITEMS

PVC, CPVC, GI sanitary and plumbing items includes all kinds of pipes, elbows, tees, reducers, couplings, nipples, flanges, compression fittings, float valves, foot valves of renowned brands like Crane, Dona, Kriss, Pegler etc.

## MILD STEEL, GI, STAINLESS MATERIAL

Deals in all kind of mild steel, GI, stainless steel material which includes but not limited to Angles, Corrugated sheet, chequered plates, tubes, Welded Mesh.

## POULTRY, AGRICULTURAL AND IRRIGATION

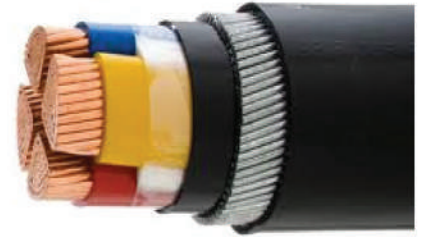
Providers of poultry, irrigation and agricultural fittings like P.E pipes, elbow, joints, union, pinking fingers. We also provide different kind of cleaning detergents specially meant for poultry and dairy forms. Specialized cutlery and knives are also available for poultry industry.



# ELECTRICAL SUPPLIES

## FLEXIBLE AND POWER CABLES

Control, Power, instrumentation, communication, welding, rubber cable, Coaxial, Fiber optic, tinned Copper, Bare Copper, Fire Alarm Cable, PVC insulated single or multi-core cables, cable glands, termination, joints, splicing kits, tapes for insulation, cable ties, cable markers, lugs, cleats & connectors.



## CIRCUIT BREAKERS, RELAYS, CONTACTORS

Deals in different kind of high voltage and low voltage miniature circuit breakers, molded case circuit breakers, relays, contactors, distribution boards of well known brands like Merlin Gerin Schneider, ABB, Mitsubishi, LS etc.



## INDUSTRIAL SOCKET / PLUGS

Also stockiest of Industrial socket and plugs of high quality brand of PCE, Austria. We are keeping almost complete range of these products.



# ALL TYPES OF CIVIL & ELECTROMECHANICAL WORKS

## **A) CONSTRUCTION ENGINEERING:**

Construction of buildings based on general planning, instruction, and control (incl. repair, improvement, or demolition work)

## **B) STONEMASONRY:**

Processing of stone materials (including quasi-stones such as concrete block and imitation stone) and production of stone works using masonry or by attaching stone to work.

## **C) ROOFWORK:**

Roof-cladding with tiles, slate, or metal sheet.

## **D) ELECTRICALWORK:**

Installation of power generation, transformer, power distribution, and interior electrical facilities.

## **E) PIPINGWORK:**

Work for installation of coolers, air conditioners, water supplies, hygiene facilities, and facilities for transport of water, oil, gas, and steam using metal pipes.

## **F) TILE/BRICK/BLOCKWORK:**

Constructions with bricks or concrete blocks or work to apply or attach bricks, concrete blocks, or tiles to structures.

## **G) SHEET METAL WORK:**

Attaching metal sheet to structures or attaching metal sheet fixtures to structures.

## **H) INTERIORFINISHING**

Interior finishing using wood, plaster board, sound absorbing board, wallpaper, tatami mat, vinyl floor tiles, carpeting, or fusuma sliding doors.

## I) FITTINGSWORK:

Attachment of wooden or metal fittings to structures.





## HAND-IN-HAND WITH SELECTED WORLD CLASS VENDORS

In order to provide the best products and solutions, we have a partner ecosystem built to deliver superior business value based on best-in-class technology.

We work hand-in-hand with selected world class vendors specializing in different IT infrastructure solution. It's the best way we know to strengthen our own unique portfolio in the areas of advanced networking products and services. Leveraging complementary capabilities allows us to add superior value to our clients' businesses.

We maximize their business productivity through comprehensive, intelligent products and services. Our expertise as business technologists matched with that of our partners, enables us to constantly meet and exceed our clients' expectations.





تاريخ الإصدار: 2023/01/23  
الرقم المميز: 3114870533



الهيئة العامة للزكاة والدخل  
General Authority of Zakat & Tax



## شهادة تسجيل في ضريبة القيمة المضافة VAT Registration Certificate

تشهد الهيئة العامة للزكاة والدخل بأن المكلف أدناه مسجل في ضريبة القيمة المضافة  
بتاريخ 2023/01/23

Hereby, The General Authority of Zakat & Tax (GAZT) certifies that the taxpayer below is  
VAT registered on 23/01/2023

**اسم المكلف:** شركة التعاقد الأساسي للمقاولات

**رقم التسجيل الضريبي:** 311487053300003

**تاريخ نفاذ التسجيل:** 2023/02/01

**عنوان المكلف:** الرياض/الرائد، الفيصلية، 11355

**Taxpayer Address:**



كمكاف مسجل في ضريبة القيمة المضافة، لا يجوز لك تحصيل ضريبة القيمة المضافة من عملائك قبل تاريخ  
نفاذ التسجيل بالضريبة. في حال تبين غير ذلك، ستقوم الهيئة العامة للزكاة والدخل بالفيحد الغرامات المستحقة

هذه الوثيقة ترسلة من النظام الذي ولا تحتاج إلى توقيع  
- المينة العامة للزكاة والدخل -



رقم الشهادة: ٤٤٤٥٧٠١٠٠٤٤٤٣٣٣٠٠  
التاريخ: ١٤٤٤/١/٢٥ هـ  
الرقم المميز: 3114870533



الهيئة العامة للزكاة والدخل  
General Authority of Zakat & Tax

المملكة العربية السعودية  
الهيئة العامة للزكاة والدخل  
General Authority of Zakat & Tax

## شهادة CERTIFICATE تسجيل

تشهد هيئة الزكاة والضريبة والجمارك بان المكلف / شركة التعاقد الأساسي للمقاولات

شركة رقم ٧٠٢١٦١٦٥٧٣ وسجل تجاري / رخصة / عقد رقم ١٠١٨٣٦٧٥

مسجل لديها بالرقم المميز ٣١١٤٨٧٠٥٣٣ بتاريخ ١٤٤٤/٠٤/١٥ هـ

وقد منح هذه الشهادة لتكثيفه من اثناء جميع معاملات ما عدا صرف مستحقاقه النهائية عن العقود .

يسري مفعول هذه الشهادة حتى تاريخ ١٤٤٥/١١/١٠ هـ الموافق ٢٠٢٤/٥/١٨ م .

(العاشر من ذو القعدة ألف و أربعمائة وخمسة و أربعون هجري)



الختم الرسمي

هذه الوثيقة مستخرجة من النظام الذي ولا تحتاج إلى توقيع  
لا يعتد بهذه الشهادة إلا بعد التحقق من موقع الهيئة [www.gazt.gov.sa](http://www.gazt.gov.sa)

AVAYA Avocent. AXIS COMMUNICATIONS belkin BLACK BOX NETWORK SERVICES

Blue Coat BROADCOM brother at your side BOSCH Canon

Check Point SOFTWARE TECHNOLOGIES LTD. CISCO DELL EATON EPSON Extreme Connect Beyond the Network

FLUKE networks FORTINET FUJIFILM FUJITSU GEIST

HGST a Western Digital brand Honeywell hp HUAWEI IBM Imation intel

Intermec JUNIPER NETWORKS lenovo FOR THOSE WHO DO. LEXMARK LG Life's Good

Logitech Panasonic plantronics Polycom

QNAP QLOGIC Quantum Raritan riverbed A brand of legend

SAMSUNG SanDisk SEAGATE SONICWALL Sun ORACLE

Symantec SUPERMICR Synology Targus TDK

Tintri TP-LINK The Reliable Choice Transcend TRANSITION NETWORKS TREND MICRO

TRIPP-LITE POWER PROTECTION UBIQUITI NETWORKS VEEAM VERITAS ViewSonic

WatchGuard xerox ZEBRA TECHNOLOGIES ZyXEL TOTAL INTERNET ACCESS SOLUTION 3M

COMMSCOPE PELCO TE connectivity Nokia Siemens Networks

ADC KRONE MOTOROLA intelligence everywhere







# CONTACT US



Office Address: Building No: 2542 PO Box: 8015 Al Malaz Dist,  
Price Abdul Mohsin Bin Abdul Aziz, Kingdom Of Saudi Arabia Riyadh



966594777360



[www.baselineksa.com](http://www.baselineksa.com)



[sales@baselineksa.com](mailto:sales@baselineksa.com)

